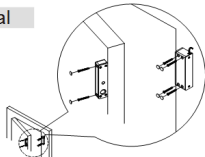


# SL165

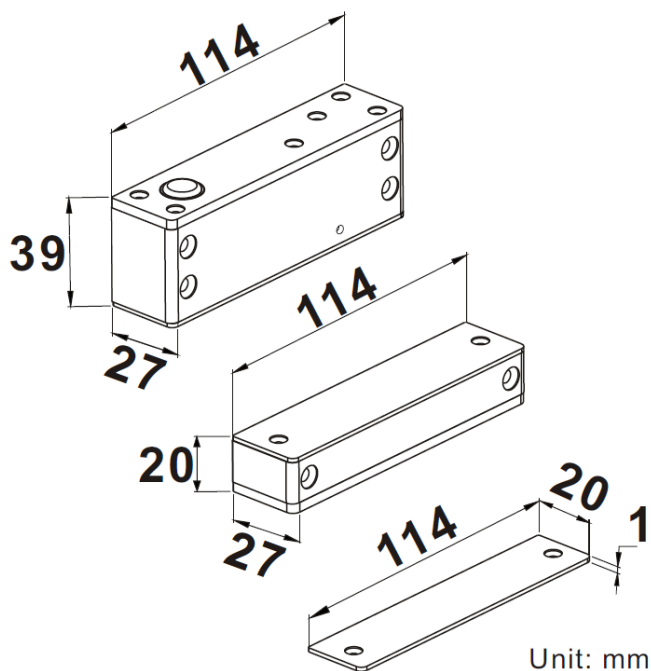
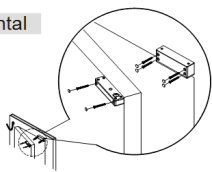
## Electric Dropbolt

- Operating voltage 12Vdc
- Fail-Safe (Power to Lock)
- Door Position Sensor
- Auto-relocking timer delay:  
0 – 3 seconds

Vertical

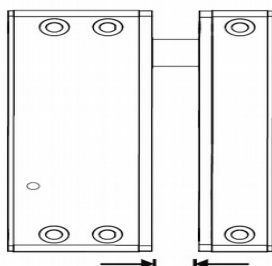


Horizontal



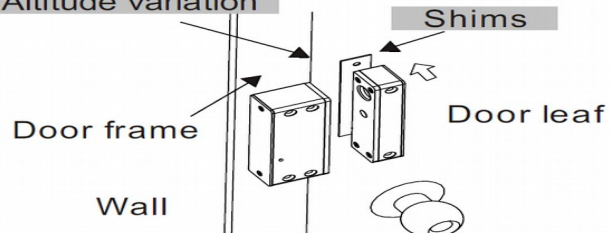
	SL-165A
Door Positions Sensor	N.C.
Power Supply	DC 12V
Operation current	570mA
Holding current	210mA
Application	90 door
Delay Time	0,3 sec.( Adjustable)
Mechanic life	more than 500,000 times
Operation temperature	Maximum 45(Room temperature 30 )
Operation environment	Temperature 0-70,Humidity 85% Rh max
Range of the door crack	Maximum of 6 mm
Bolt	14mm(Throw) x 12.7mm(Diameter)
Weight	450g (included wrapping)

### Attention



Maximum distance as 6mm.  
It is unable to lock if the  
spacing is exceeding 6mm.

Altitude variation



Please use shim when there is  
an altitude variation at the joint  
of the door frame and door leaf.